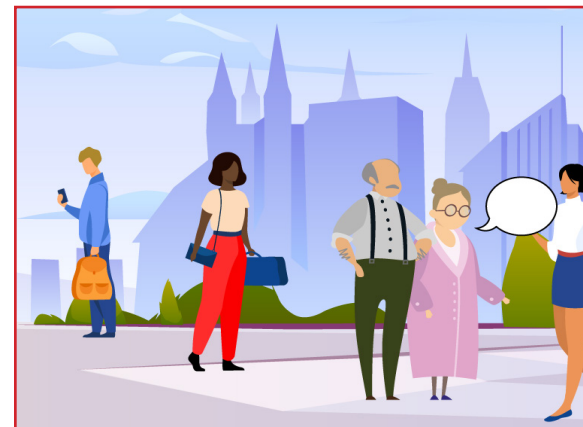
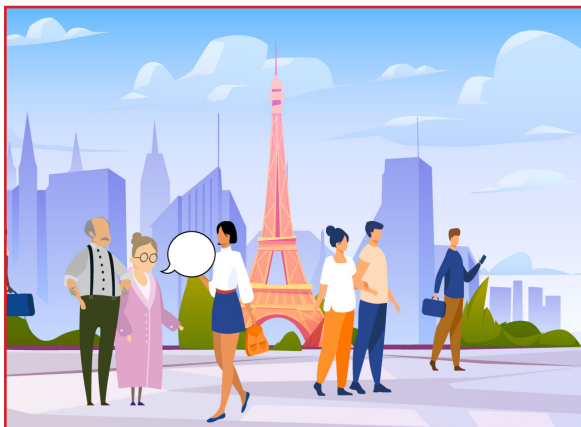


UNIT 26: UNEXPECTED SITUATION: GETTING LOST



ELENE

SITUATED ENGLISH **STUDY & LEARN**

2021-1-PL01-KA220-ADU-000033465



**Co-funded by
the European Union**

Funded by the European Union. Views and opinions expressed are however those of the author(s) only and do not necessarily reflect those of the European Union or the European Education and Culture Executive Agency (EACEA). Neither the European Union nor EACEA can be held responsible for them.

SECTION A

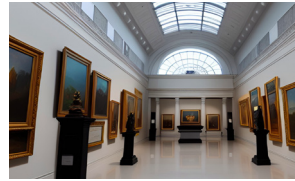
KEY VOCABULARY



Hotel



Embassy-Consulate



Museum



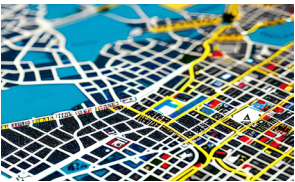
Hospital



Police station



Train station



City map



Post office



Main street



Bank



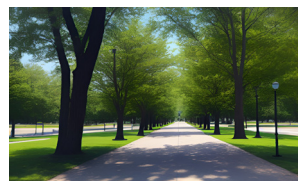
Wallet-Purse



Traffic lights



Bridge



Park



Police officer



Passport



Mobile phone



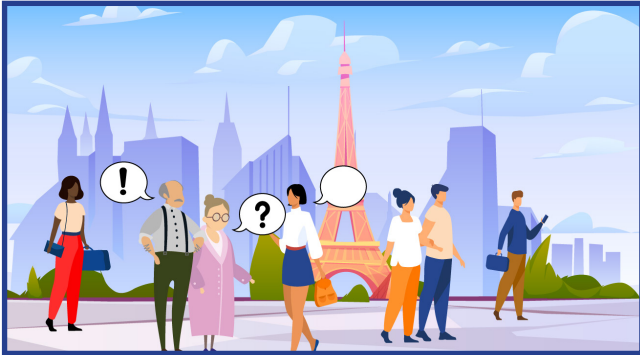
Bag



Church

SECTION B

What you might hear and see



- Which hotel are you staying at?
- Please stay calm.
- I will help you.
- We will do everything we can.
- I'll give you a map of the city.



SECTION C

What you might need to SAY or ASK in this place

<i>Greetings Asking for attention</i>	Hello Good morning Good afternoon
<i>Thanking</i>	Thank you Thank you for your help
<i>Asking for help from people -police around</i>	I'm lost. Can you help me find my hotel? I'm looking for the Spanish Embassy. Which is the best way to the post office? How can I find the main street, please? Can you show me on the map how to get to the British museum, please? How do I get to the beach from here? I don't know where I am. I've forgotten where I'm staying. Where is the nearest tube station? I've forgotten the name of my hotel.
<i>Leave-taking expressions</i>	Good bye Have a good day

SECTION D

Basic Dialogues for Getting Lost

Asking for directions



Tourist: Excuse me. I need your help, please.

Passerby: Yes, how can I help you?

Tourist: I'm so sorry for disturbing you, but I am lost. I'm looking for the Italian Embassy.

Passerby: Oh, don't worry. You're almost there.

Tourist: Good. Can you tell me how to get there?

Passerby: Sure, go along this street for about 2 minutes and turn left at the traffic lights.

Tourist: Okay.

Passerby: And then walk down to the next main road and take the second left.

Tourist: Okay, turn left at the traffic lights and then the second left.

Passerby: Exactly. When you are on that main road, walk down until you get to the train station.

Tourist: Okay.

Passerby: When you're at the train station, you will see the Embassy from there.

Tourist: Great, thank you very much for your help.

Passerby: You're welcome. Have a nice day.

FINAL STEP

Exercises

Write down the words used for the pictures below.



Fill in the Dialogue below.

Tourist: Excuse me. I don't know where I am.

Passerby: Ok, no worries. I'll help you.

Tourist: Thank you, please?

Passerby: Yes, sure. I'll show you where you are on the city map.

Put a tick next to the statements you say or hear when you are lost.

- Put your items on the counter.
- I am lost.
- We are closed today.
- Let me give you the directions.
- Go straight ahead and then turn left.
- May I see your passport?

FINAL STEP

Exercises

Dialogue for getting lost : Elene and Erasmus are lost in the city and they are asking for directions.



Read the dialogue below and fill in the blanks with the most appropriate option.

- a) Is it far from here
- b) Take the first left
- c) We will turn right
- d) Can you help us find our hotel
- e) Let me give you the directions

Erasmus: Excuse me officer, I think we are lost.

..... please?

Police officer: Certainly, what's the name of your hotel?

Erasmus: It's the Triarchies Hotel.

Police officer: Well, I think I know where it is.

Erasmus: Oh, really? ?

Police officer: No, not really. Actually, it's only about a 20 minute walk. Shall I call you a taxi?

Erasmus: No, thank you. The weather is nice, so we don't mind walking.

Police officer: Okay then,

Erasmus: We appreciate that.

Police officer: Now, go along this street until you get to the train station. You'll see the traffic lights there, turn right onto Abbey Avenue.

Erasmus: Okay,

Police officer: Correct. Then go straight ahead, and you will see the Triarchies Hotel on the right.

Erasmus: Okay, we will go straight ahead and take the first left.

Police officer: Yes sir.

Erasmus: Understood, thank you very much for your help.

Police officer: No problem, have a nice day.

VIDEOS

External Video Links

- <https://www.youtube.com/watch?v=rMyq2Uman6s>
- <https://www.youtube.com/watch?v=UItL1cqZ41c>

