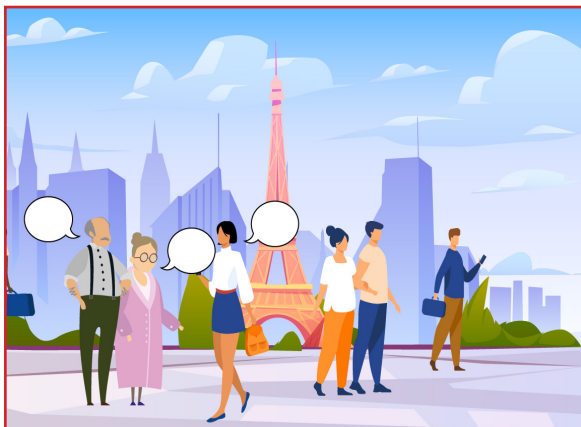


# UNIT 25: GIVING DIRECTIONS



**ELENE**

## **SITUATED ENGLISH** **STUDY & LEARN**

2021-1-PL01-KA220-ADU-000033465



**Co-funded by  
the European Union**

Funded by the European Union. Views and opinions expressed are however those of the author(s) only and do not necessarily reflect those of the European Union or the European Education and Culture Executive Agency (EACEA). Neither the European Union nor EACEA can be held responsible for them.

# SECTION A

# KEY VOCABULARY



Traffic lights



Navigation



Map



Roundabout



Corner



Street



Behind



Bus Station



Turn right



Turn left



Next to

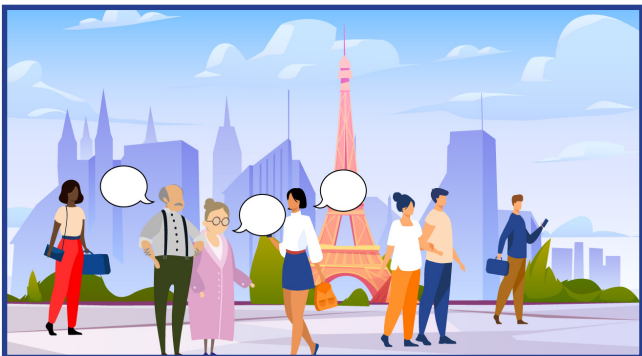


Go straight on

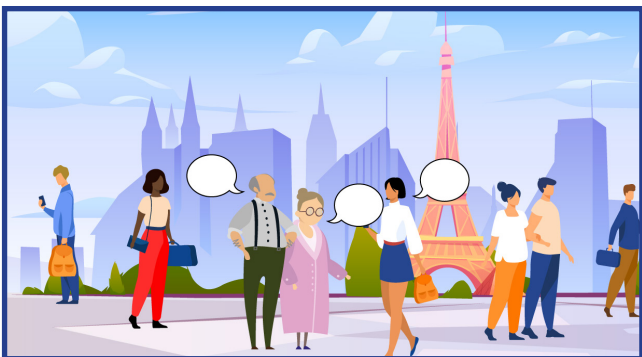


# SECTION B

## What you might hear and see



- Do you want to go by bus or by train?
- You should get off here.



- Go straight on and take the second left.
- Take the next train.
- Turn left when you see the hospital.



# SECTION C

## What you might need to SAY or ASK in this place

<i>Greetings Asking for attention</i>	Excuse me, sir! Excuse me, ma'am!
<i>Thanking</i>	Thank you very much for your help.
<i>Questions and statements for asking directions</i>	I would like to go to the National History Museum. How can I get to the airport? Where is the nearest hospital? I want to go to Waterloo Station. How can I get to Platform 2? Excuse me, do you know where the nearest exchange office is? What is the best way to get to the train station? Do you know which bus to take?
<i>Leave-taking expressions</i>	Good bye Have a nice day

# SECTION D

## Basic Dialogues for Asking for and Giving Directions

### Asking for directions



**Tourist:** Excuse me. How can I get to the National Museum?

**Passerby:** You need to take a bus. It is two stops from here.

**Tourist:** Do you think I can walk?

**Passerby:** Well, it may take about half an hour.

**Tourist:** That's fine.

**Passerby:** Okay, then take the second right and go straight on.

**Tourist:** Thank you.

**Tourist:** Excuse me, we have no internet connection. Can you help us find our way?

**Passerby:** Yes, how can I help you?

**Tourist:** We would like to find the Fine Art Gallery.

**Passerby:** Let me show you where it is.

**Tourist:** That would be great.

**Passerby:** It is here on the map. Here you can see the walking route.

**Tourist:** Can we take a picture of the screen?

**Passerby:** Sure.

**Tourist:** Thank you very much.

### Giving directions



**Tourist:** Excuse me, can I ask you a question?

**Citizen:** Yes, sure.

**Tourist:** Is there a pharmacy near here?

**Citizen:** Let me think. I think there is one on the corner of Black Street.

**Tourist:** How can I get there?

**Citizen:** Go straight on and turn left at the traffic lights. Walk along Black street, it is on the right, on the corner.

**Tourist:** Thank you very much!

**Tourist:** Excuse me, can you help me please?

**Citizen:** Yes, of course I can.

**Tourist:** I need to go to the city library. Do you know how I can get there?

**Citizen:** On 63rd street, go straight. Take the second left and continue going straight. It's across the street.

**Tourist:** Is it very far?

**Citizen:** No, it should be less than 10 minutes on foot.

# FINAL STEP

# Exercises

Write down the words used for the pictures below.



Fill in the Dialogue below.

**Tourist:** .....

**Citizen:** Yes, how can I help you?

**Tourist:** .....

**Citizen:** Go straight on and turn right. Keep going straight. The hospital is on the right.

**Tourist:** .....

Put a tick next to the statements you say or hear while asking for directions.

- I can not find my luggage.
- Excuse me, can I ask you something?
- Turn right and go straight on.
- Can I see your passport?
- Is it far from here?

# FINAL STEP

## Exercises

*Dialogue for asking directions : Elene and Erasmus need help with directions. They ask people to find their way.*



*Read the dialogue below and fill in the blanks with the most appropriate option.*

- a) Is it very far? Do you think we can walk?
- b) Ok, no problem. We like walking.
- c) Thanks a lot.
- d) How can we go to

**Elene:** Excuse me. .... the National Museum?

**Passerby:** You need to take a bus. It is two stops from here.

**Elene:** .....

**Passerby:** Well, it can take about half an hour.

**Elene:** .....

**Passerby:** Okay then take the second right and go straight on.

**Elene:** .....



Section A

Section B

Section C

Section D

Final Step

Videos

# VIDEOS

## External Video Links

- <https://www.youtube.com/watch?v=Agajl4B1i28>

